

Johns Hopkins Lyme Disease Research Center



Year End 2018

2018 IMPACT REPORT



In this newsletter we are pleased to share with you the inaugural [Impact Report](#) of the Johns Hopkins Lyme Disease Research Center. We are at an important tipping point for Lyme and tick-borne disease research, and our Center is playing a vital role in helping advance disease understanding and patient care. The [Impact Report](#) highlights the breadth of our program and shows the progress we are making.

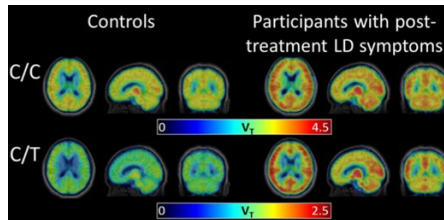
RESEARCH



The Center's "bedside to bench" Lyme disease research program utilizes a breadth of leading-edge clinical and laboratory disciplines to determine what is driving persistent illness in individuals. Please [watch this video](#) to learn more.

Recent Insights from SLICE Studies

A recent study published in the *Journal of Neuroinflammation* shows evidence of overactive microglia in patients with post treatment Lyme disease as compared to controls.



PET imaging study of glial activation in patients with post treatment Lyme disease

Microglia are the brain's resident immune cells, and these findings could indicate a potential biological link to patients' cognitive symptoms.

More research is needed to determine if an aberrant microglia neuroimmune response could be linked to the neuropsychiatric symptoms of post treatment Lyme disease and whether immune-modulating therapeutic strategies, such as those used in other central nervous system conditions, could benefit these patients.

To read the entire publication [click here](#).

Collaborative Research Network

The Center's SLICE Studies (Study of Lyme disease Immunology and Clinical Events) have enabled us to establish a preeminent biorepository of well-characterized blood and skin tissue samples from patients with all stages of Lyme disease.



These valuable patient samples are the cornerstone to multidisciplinary research collaborations. By utilizing advanced research methods, including the powerful "omics" tools of genomics, proteomics, metabolomics, and microbiomics, our research aims to improve the understanding of the varied manifestations of Lyme disease.



Learn more about our research program in our [Impact Report](#).

Our mission is to understand and urgently address the varied manifestations of Lyme disease and translate our pioneering multidisciplinary research into improved patient care, education, and health outcomes



EDUCATION

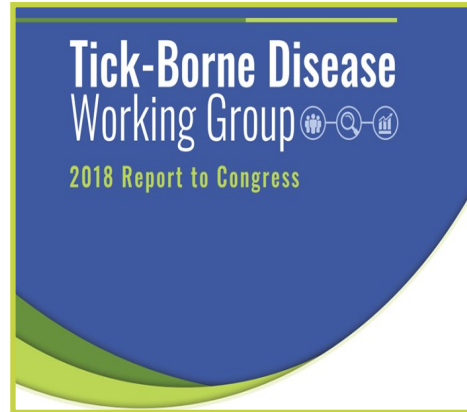
Our Center's scientists present research findings at scientific conferences throughout the year. Our Center also holds an annual Lyme disease Continuing Medical Education (CME) program for health practitioners at the Johns Hopkins University School of Medicine in the spring.



Center Director, John Aucott, MD, speaking at the "Lyme Disease in the Era of Precision Medicine" LymeMIND conference in NYC, October 2018, hosted by The Institute for Next Generation Healthcare in the Icahn School of Medicine at Mount Sinai and sponsored by the Steven and Alexandra Cohen Foundation.

You may listen to Dr. Aucott's talk at the 2018 LymeMind Conference [HERE](#).

NATIONAL IMPACT



For the past year, Center Director, John Aucott, MD, has served as Chair of the Health and Human Services (HHS) Tick-Borne Disease Working Group (TBDWG). [The initial TBDWG report](#) was released to the Secretary of HHS in November 2018 and sent to Congress.

[The report](#) identifies gaps and provides recommendations for the federal response to tick-borne disease prevention, diagnosis, treatment and research and highlights areas for improvements in policy and resources to better address this growing health crisis.

Clinical Research Team

John Aucott, MD

Associate Professor of Medicine
Director, Lyme Disease Research Center

Alison Rebman, MPH

Senior Research Data Analyst
Co-Director for Clinical and Epidemiological Research

Ting Yang, PhD

Senior Biostatistician

Leonardo Diaz, BS, CCRP

Clinical Research Program Manager

Erica Mihm, BS

Research Program Coordinator

Cheryl Novak, MSN, CRNP

Certified Registered Family Nurse Practitioner

Susan Joseph, BSN, RN

Senior Research Nurse

Cindi Crews

Senior Medical Office Coordinator

Laboratory Research Team

Mark J. Soloski, PhD

Professor of Medicine
Co-Director for Basic Research

Maria Gutierrez, PhD

Post-Doctoral Research Fellow

Daniella Villegas de Flores, BS

Research Specialist II

Thelio Sewell, MS

Research Technologist

Rafaello Cimbri, MS

Flow Cytometry Lab Manager

Newsletter Production

Nancy Dougherty, Editor

Susan Leibtag, Graphic Design

IN THE NEWS

Tick-borne diseases such as Lyme disease hit record highs in the U.S., CDC says. Experts say the real burden of tick-borne infection is probably 10x what's reported. [NEWS STORY HERE](#)

SUPPORT THE CENTER

Philanthropic support makes a difference.

Donations are used to progress our pioneering research.

Your gift helps us advance critical knowledge and clinical tools to improve health outcomes for Lyme disease patients.

[HOW TO GIVE](#)

The Center is grateful for the support of the Steven and Alexandra Cohen Foundation, Bay Area Lyme Foundation, Global Lyme Alliance, individual donors, family foundations, and collaborators

[JOHNS HOPKINS](#)

[LYME DISEASE RESEARCH CENTER](#)

www.HopkinsLyme.org

2360 W. Joppa Road

Lutherville, Maryland 21093



JOHNS HOPKINS
MEDICINE